

## ANL High Power Fuse Block

24 Karat Gold Plated, Solid Brass ANL Fuse Block comes complete with sturdy Plastic Base, crystal clear Plastic Cover, and two hold-down nuts. Holds one High Power ANL Fuse. (Fuse not included). Accepts 1/0, 2 & 4 gauge power cable.



**No. 64-1006**

## CLEAR AGU FUSE HOLDER

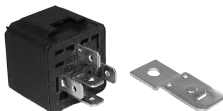
Each Clear Fuse Holder from Philmore accepts one AGU fuse from 20 amps to 120 amps. This unique Fuse Holder is made for 4-8 or 10 Gauge power cable. It has 24 Karat Gold Plated contacts.



**No. 64-1009**

## 12V Relay

This relay is equipped with a removable mounting tab and can be used with Philmore power relay socket. Part No. 64-1217 12VDC - 30 / 40A, SPDT.



**No. 64-1240**

## Relay Socket & Harness

Heavy duty relay socket with 17" Leads, is intended for use with Philmore No. 64-1240 12V relay, SPDT.



**No. 64-1217**

## Top Mount Battery Terminal

This Battery Terminal is made of Solid Brass and is plated with pure 24 Karat Gold for Maximum Power and Corrosion Free Connection. Tighten wing-nut onto connector for snug fit.



**No. 64-2000**

## Post Extender for GM Battery Side Post

Allows easy hookup of accessories that require uninterrupted power from the battery, such as car alarms, cellular phones, etc. The post extender can be used on either positive or negative terminal.



**No. 64-2005**

## Antenna Adaptors

### Antenna Extension Cord

#### Motorola Type Plug to Motorola Type Jack

These antenna lead extension cords have a Male connector on one end and a Female on the other. It is 100% shielded with braided Copper and has abrasion resistant insulation. Standard size Motorola Connectors.



**No. 64-3008** - 8 Ft.  
**No. 64-3012** - 12 Ft.

### Chrysler Antenna Adaptor

This 7-inch shielded adaptor cable with snap-lock, converts a Chrysler Vehicle Antenna, 2002-up, to an Aftermarket Radio.



**No. 64-3015**

### GM to Motorola Adaptor

Converts the Mini-GM Plug on Antenna Cable in Newer GM Vehicles to Standard Size Motorola Plug for Connection to a Radio having a Standard Motorola Jack. Six inches. If necessary, the Right-Angle Plug may be straightened.



**No. 64-3020**

### Motorola to GM Adaptor

Converts a Standard Size Motorola Plug to the Mini GM Size. Connects a Motorola equipped Antenna to a GM Radio Equipped with a Mini Jack. Six inches. If necessary, the Right-Angle Plug may be straightened.



**No. 64-3025**